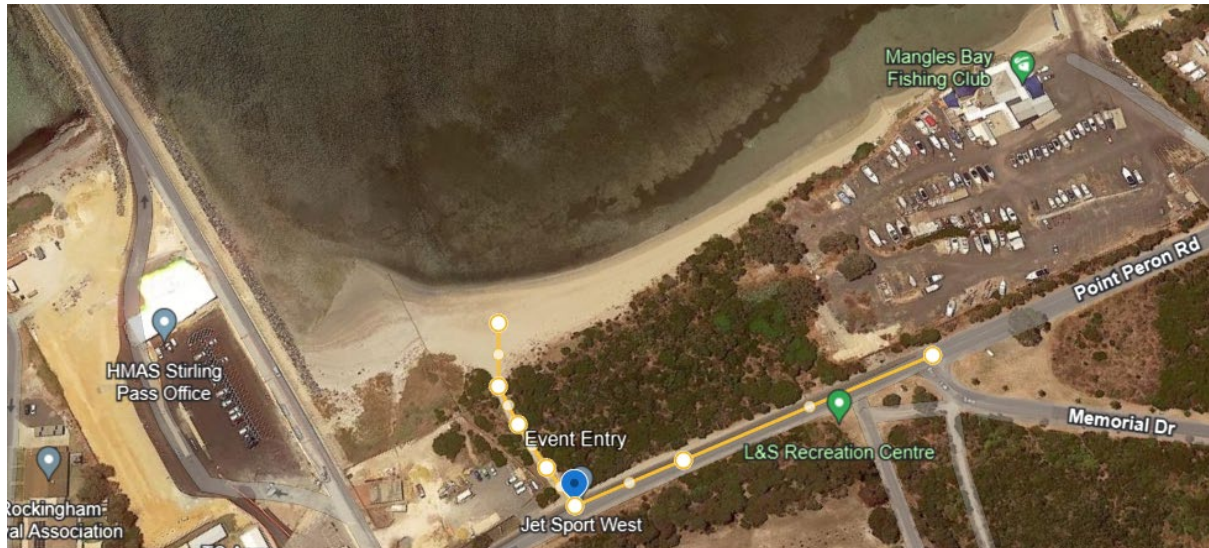




## Event Detail: Salt, Sand & Spray

**When** – Jan 18<sup>th</sup> 2026 from 0730

**Where** – Mangles Bay, Point Peron Rd. Rockingham  
[Location Map](#)



**What to expect** – This event is the first circuit race for MJWA for the 2026 season and will consist of a fixed course in the bay for circuit racing activity. A course map can be found later in the document.

MJWA will have a beach presentation of the 2025 Championship in the lunch break

### **RACE FORMAT**

- Circuit race based on craft groups
- MILL Start - Start lights and Flags in use
- 4 Heats per group of 5 laps per heat
- First boat over the line wins and so on in descending order
- Boats accrue points from 1 to 10. First boat, 1 point, Second boat 2 points and so on

### **CHAMPIONSHIP POINTS**

The boat with the lowest number of heat points wins the day for each group. IE – a craft with 3 points will get 100 CHAMPIONSHIP points and so on in descending order. In the event of a tie for any positions, a time-based count back will be undertaken and the craft with the lowest overall race time will be the winner of the tie.

Below is the mapped areas for the event



1. **Start/Finish** – Between the flags
2. **Race Lap's Path** – This is the GREEN line and consist of a 1km lap.
3. **Special Event** – MJWA will make all efforts based on available time and interest to provide a special event for the day.



## **Supplementary Regulations: Salt, Sand & Spray**

**Date: 18 Jan 2026**

**Location: Mangles Bay - Rockingham**

**Craft: Mini Jet Only**

**Director: Brad Cuss**

**Sweep: Not Required**

**Price: \$50 Per Craft**

- ✓ **This event is beach access and launch on the sand a 4WD is recommended**
- ✓ **MJWA have a key for the gate to access the beach, there is a Toilet on site**
- ✓ **Race signage will be in use on Point Peron Road**
- ✓ **Race signage will be on the beach North of the access road**
- ✓ **Craft Scrutineering from 0800 – all craft must attend and be in race prep condition as per the rules. Wear plates under hulls is not required and Roll hoops are not required for the event.**
- ✓ **Event and safety brief will be at 0900 around the Club Trailer**
- ✓ **Lunch and 2025 presentation from 12PM**
- ✓ **Course is as per Map found above and subject to change on the day for reasons determined by the race officials**
- ✓ **A group split will occur on the day. Group A & Group B including Formula Mini**
- ✓ **Race Lights and Flags will be in use**
- ✓ **Mill start means you mill at idle watching and approaching the start line**
- ✓ **Teams can bring a BBQ to the beach for lunch – All rubbish must be taken with you**
- ✓ **No checkpoints manned in this event**
- ✓ **Craft landing area will be the beach in front of the BLUE area – no craft within 10mts of the timing tent**
- ✓ **No fuelling of craft within 20m of the water edge**
- ✓ **This event does contribute race points to the season per the rules**
- ✓ **Camping is not permitted – respect the area and leave it as you found it or better**
- ✓ **Emergency procedures as per event approvals and contact details in event folder**

Depending on timing a 'Ladies Race' will be run in the afternoon as a time trial style event for those who now hold their RST!