



SUPPORT CREW NOTES

Event – 2025 Brass Monkey

Where – Bridgetown WA –Sunnyside Campground, Sunnyside Road, Left off Tweed Road approximately 12km from the turn off the South Western Hwy. Look Out for the MJWA sign at the turn in point!

Practice Launch Point Day 1 – The launch and retrieve point is down the bank of the river at Sunnyside camp ground for day 1 and retrieve from Blackwood River park, under the bridge if water levels permit. This will be finalised on the day.

Practice Day 1

Leave Sunnyside Campground upstream, regroup point before Winnejup Falls, this area is not accessible to the general public as it is on private property. Any craft that do not make this point will be told to wait on the side of the river and as the main group returns downstream they will be towed back to Sunnyside for removal from the water.

Additional river access may be advised to continue down river and conduct a full river practice to the Bridge or beyond. Will be advised at Briefing on the day, water level dependant.

RACE Day 2

Check and regroup point at Winnejup Falls, this area is not accessible to the general public as it is on private property. Any craft that do not make this point will be told to wait on the side of the river and as the main group returns downstream they will be towed back to sunnyside for removal from the water, the remaining group will carry on past Sunnyside towards Bridgetown.

Support crew must wait at Sunnyside until the group passes by, once your craft has been passed you can proceed to Checkpoint 1, support crew of the sweep boat **MUST** wait until the sweep has passed and the all clear is given.

RACE Day 2 - Checkpoint 1 – Evans Road, 6.3 km approx. Down Tweed Rd from Sunnyside

This is at the road crossing off Tweed Road to your right as you head back towards Southwest Hwy, this is also private property so please be respectful. This point is for spectating and also the last point to remove a craft on the river towards Bridgetown.

If your craft breaks down between this crossing and the finish it will be towed to the end of the race in Bridgetown.

You can approach the crossing however if flooded it is not advised to cross to the other side.

RACE Day 2 – Checkpoint 2 & Spectators for Basin Rapids and The Basin

The access to this area is via private property – NIL vehicle access. If you wish to view from this point you must park on the side of Tweed Road and walk approximately 600mts down the paddock on the right-hand side of the fence down to the water. **DO NOT ENTER THE PROPERTY**

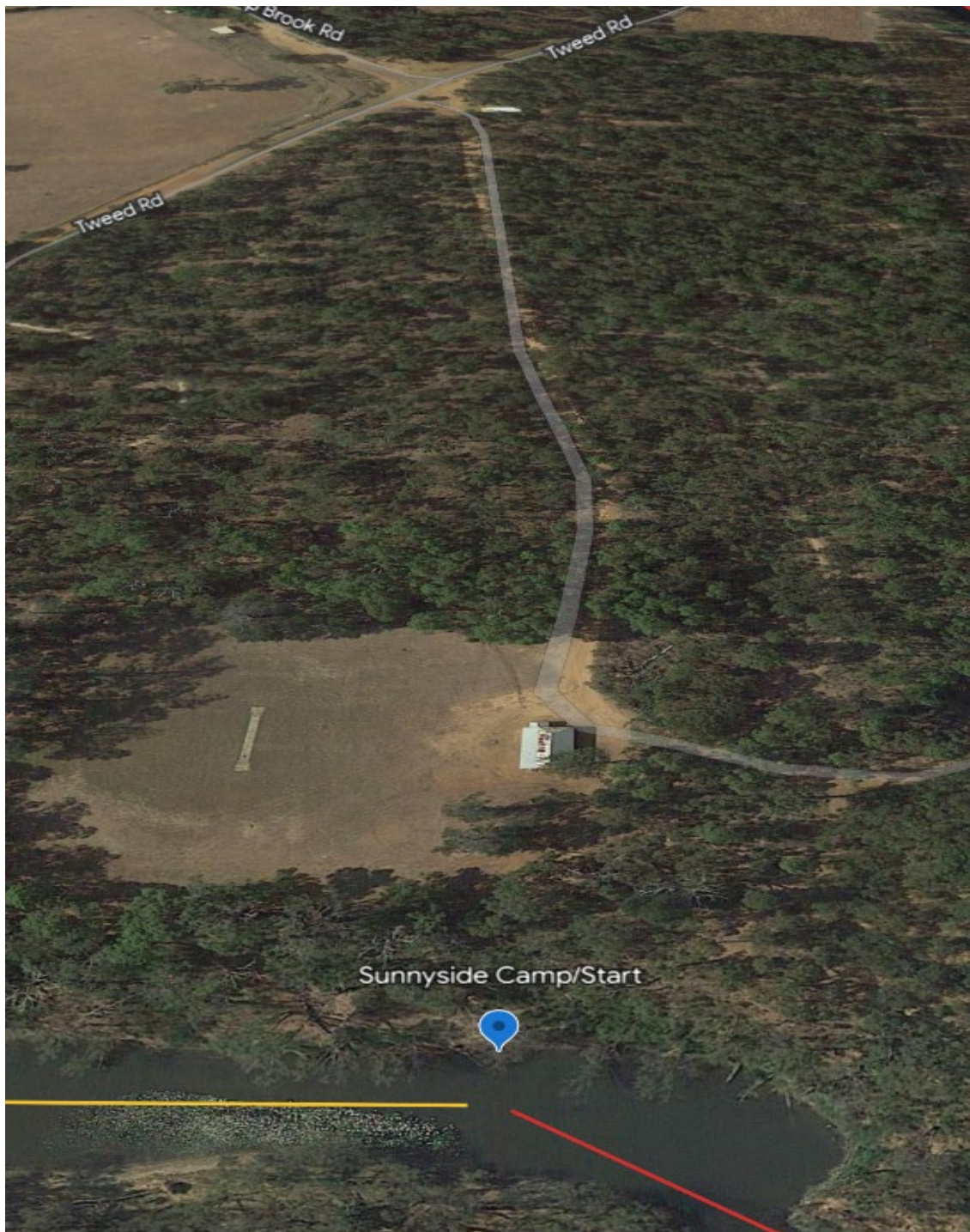
This point does not allow any craft retrieval and is the last point for viewing before the craft arrive in Bridgetown.

Craft that do not make this point will be under tow to Bridgetown.

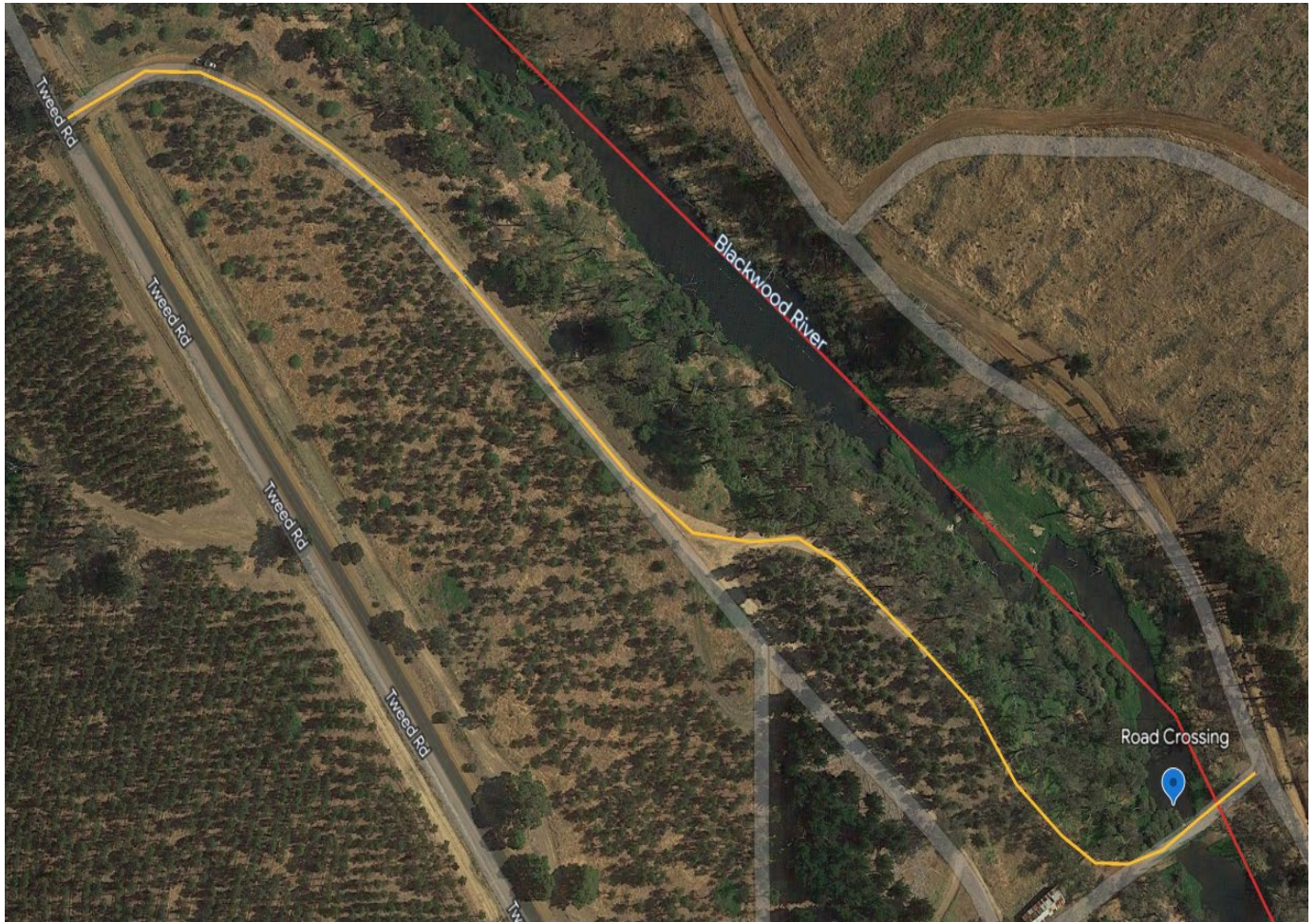
RACE Day 2 – Beyond the Bridge

If water levels permit craft will carry on past the bridge a further 8km. Craft will stop at the Blackwood River Access Ramp, Wandillup. See additional information below.

LAUNCH AND RETRIEVE – SUNNYSIDE OVAL



Day 2 - Checkpoint 1 – 6.3 km approx. down Tweed rd from Sunnyside



Day 2 – Basin Rapids & Basin



To get to the finish line on day 2 in Bridgetown, turn right onto Tweed Road and head towards the southwest hwy, turn right again and continue back towards Bridgetown, before you get to the main bridge turn right into the Blackwood River Park (entrance closest to bridge) and then down towards the river with a sharp left to get to the river bank.

Please park in an orderly fashion as this is a public open space and MJWA is on show, our conduct is important to us.

Finish Line Day 2 – Craft Retrieval Point – Bridgetown Blackwood River Park



ALTERNATE Finish Line Day 2 – Craft Retrieval Point – TBA

If water permits craft will time out at the bridge and re group for the final leg down river to the Access ramp. This will be decided on the Saturday pending river access to get boats onto trailers. The Race Director will decide and advise. This stretch may also be treated as an expedition. See below



To get to the Blackwood River Access ramp you need to access the Brockman highway (251) from Bridgetown and continue approximately 6.5km West towards Nannup, The access area will be in your RIGHT hand side.

Please remember intoxicants, littering, damage to the environment or any other breaches of our rules will impact your team and MJWA.

Phone numbers, UHF radio and further support crew details will be provided at the drivers' briefing on both days, **YOU** are responsible for your crew and helping others if needed, MJWA is a family, look after each other!!!