

Mini Jet WA Incorporated (A1043946S)

# Competition Rules & Vessel Specifications

2025

DOI	Revision	Author	Checked By	Revisions / Notes
09/02/23	1.0	BC	TR, JW	First issue for Club AGM – To be voted on and adopted
16/02/23	1.1	BC	TR, JW, PW	Amendments applied post AGM - Adoption at GM required
04/04/23	1.1	BC	Committee	Current Rule Set Adopted
02/05/23	1.2	BC	BC/KE	Emergency Additions Avon Specific / Wording Amendments
16/05/23	1.3	BC	BC/JW/TR	Addition of reference drawings
21/11/23	1.4.1	BC	JW/PW/TR	Specification Changes
11/01/24	1.5	BC	JW/TR/SH	Change to Section 200 & 310
14/01/25	1.6	EC	BC	Re-Format to current - inclusion of Formula Mini class

1	GENERAL .....	3
2	DEFINITIONS .....	3
3	COMPETITORS.....	4
4	SUPPORT CREW .....	6
5	IDENTIFICATION NUMBERS .....	6
6	EVENTS .....	7
7	OFFICIALS .....	10
8	SCRUTINEERING .....	11
9	PRE-EVENT SCRUTINEERING .....	11
10	POST-EVENT SCRUTINEERING .....	12
11	PRODUCTION OF TECHNICAL SPECIFICATIONS .....	12
12	START, FINISH, TIMING, FLAGS AND BUOYS.....	12
13	INTOXICANTS.....	13
14	ENVIRONMENT AND LITTERING .....	14
15	ILLEGAL ASSISTANCE.....	14
16	WITHDRAWALS .....	14
17	PROTESTS.....	14
18	Action of Official.....	15
19	APPEALS .....	16
20	SERIOUS BREACHES .....	17
21	PERFORMANCE BREACHES.....	18
22	OTHER BREACHES .....	18
23	POWER TO IMPOSE A PENALTY.....	19
24	APPLICATION OF A PENALTY .....	19
25	NOTIFICATION .....	19
26	UNPAID FINES.....	19
27	MINI JET WA CHAMPIONSHIPS AND PERPETUAL TROPHIES .....	19
28	POINTS .....	20
29	EVENT TROPHIES .....	20
30	SWIMMING TEST .....	21
31	COMPETITION LICENCES .....	21
32	GENERAL LICENCE .....	22
33	INSURANCE .....	23
34	AMENDMENT OF COMPETITION RULES .....	23
35	VESSEL SPECIFICATIONS .....	24



36	MINI JET CLASSES .....	28
37	AVON DESCENT SPECIFIC REQUIREMENTS .....	30
38	REFERENCE DRAWINGS.....	31

## 1 GENERAL

- 1.1 Mini Jet WA Inc. (hereinafter referred to as the Club) has complied these Rules to be known as the Competition Rules of the Club (hereinafter referred to as “these Rules”).
- 1.2 These Rules shall govern all Club Competitions.
- 1.3 The Vessel Specifications are part of the Competition Rules.
- 1.4 These Rules shall come into force on 1 April 2023 and supersede all previous issues.
- 1.5 The Secretary shall have a copy of these Rules at all meetings and events of the Club.

## 2 DEFINITIONS

### 2.1 CLASS - ALUMINIUM

- 2.1.1 A class of Mini Jet in which the boat is constructed of aluminium alloy (from tow point to transom) and in which the cost of participation is intended to be kept to a minimum to encourage class numbers to grow.

### 2.2 CLASS – FIBREGLASS

- 2.2.1 A class of Mini Jet in which the boat is constructed of fiberglass and or a combination of fiberglass and aluminium (from tow point to transom) and in which the cost of participation is intended to be kept to a minimum in an effort to encourage class numbers to grow.

### 2.3 APPROVED

- 2.3.1 Shall mean approved by a properly constituted General Meeting and published in the Club newsletter.

### 2.4 BEACH LANDING

- 2.4.1 A landing shall be defined as a beach landing if the as a result of that landing more than 50% of the craft is clear of the water’s edge.

### 2.5 BOATAKHANA

- 2.5.1 An event including only heats designed to test the acceleration and manoeuvrability of the craft, and the skill and judgement of the driver and co-driver.

### 2.6 CIRCUIT RACE

- 2.6.1 A race on a course involving any corners or departures from a straight path.

### 2.7 NAVIGATOR

- 2.7.1 The person other than the driver carried in a Mini Jet.



## 2.8 MINI JET

2.8.1 A marine jet-propelled craft that meets all the specifications of section 35 onwards.

## 2.9 DRIVER

2.9.1 The person in control of the steering of the craft during an event.

## 2.10 EVENT

2.10.1 A competition or race in which a Mini Jet takes part, and which is given a competitive nature by the publication of results. An event may consist of a series of heats e.g. Circuit events. Circuit events shall allow only 1 occupant in the craft for the purpose of a race.

## 2.11 NWR

2.11.1 Navigable Waters Regulations.

## 2.12 INBOARD MOTOR

2.12.1 All parts including the power head, shafts, casings, mounts, covers, as supplied by the manufacturer. Parts carried in the boat during an event are considered part of the Motor for this definition.

## 2.13 SUPPLEMENTARY REGULATIONS

2.13.1 Regulations supplementary to these Rules are compiled by the organiser with the object of explaining the details of an event.

## 2.14 TEAM

2.14.1 The driver, the navigator, the craft and the support crew. A team may include more than one entry.

# 3 COMPETITORS

## 3.1 Minimum number of competitors

3.1.1 River Event of any kind 2.

3.1.2 Circuit event of any kind 1.

3.1.3 The same competitor(s) shall be in the craft throughout the event.

## 3.2 Minimum age

3.2.1 The minimum age of a competitor in the solo class is eighteen (18) years.

## 3.3 Junior competitor to be accompanied.

3.3.1 A junior competitor shall be accompanied by a competitor over the age of seventeen years unless the event is under constant visual supervision by the Race Official in which case two junior competitors may compete together.

## 3.4 Age as at the date of the event

3.4.1 Unless stated otherwise, the age of a competitor is their age as at the date of the event.

TYPE OF COMPETITION	AGE OF < 14 YEARS	Competitor 14 to 16 on or before 31 Dec of the calendar year of event	Turning 17 on or before 31 Dec of the calendar year of event	Minimum grade of licence
Avon Descent	No	Yes, with driver 30+	Yes, with driver 17+	Expert
Sunnyside / Blackwood	No	Yes, with driver 17+	Yes, with driver 17+	Novice / Expert
All other river races and practice / training days	No	Yes with 17+	Yes	Minimum Novice
Circuit events	No	Yes, if navigator is Expert	Yes	Minimum Novice

### 3.5 Indemnity

3.5.1 A competitor under the age of eighteen years shall have an indemnity form signed by their parent or guardian. This shall be produced to the entry receiving officer before the start of the event.

### 3.6 Hold a competition licence

3.6.1 Each competitor shall be the holder of a current Club competition licence.

### 3.7 Exchanging roles

3.7.1 Competitors may exchange roles as Driver and Co-Driver during an event provided, they hold the required grade competition licence.

### 3.8 Requirements to wear

3.8.1 When a competitor is in a craft on the water, they shall always correctly wear the following items that meet the requirements of the Club specifications:

3.8.1.1 *PFD L100 Non-Auto Inflate for open water events or greater than 400M offshore + PLB with GPS or as specified by the Supplementary Regulations issued for the event.*

3.8.1.2 *PFD L50 for closed water or river events.*

3.8.1.3 *An approved helmet.*

3.8.1.4 *An approved wetsuit.*

3.8.1.5 *Approved wetsuits are optional at circuit events.*

3.8.1.6 *Footwear.*

## 4 SUPPORT CREW

4.1 If specified in the Supplementary Regulations each craft shall in an event have a support crew of at least one adult person.

4.2 The support crew of a team need not necessarily be members of the Club.

4.3 If specified in the Supplementary Regulations the support crew vehicle shall display the number of the craft, it is supporting.

4.4 Motorcycles shall not be used as support crew vehicles.

4.5 Each member of the support crew shall make themselves acquainted with these Rules and with the Supplementary Regulations of an event.

## 5 IDENTIFICATION NUMBERS

- 5.1 Upon becoming a full financial member of the Club, the member requests a vessel Identification Number.
- 5.2 Providing that the number is between 001 and 299 and has not been issued to another member the Club will upon payment of the fee issue and authorise that Identification Number for use by the member.
- 5.3 The Club shall keep a record of all Identification Numbers issued showing to whom issued and date of issue.
- 5.4 The Identification Number issued to a member is for their exclusive use for all types of racing and shall be retained by them indefinitely provided the annual fee is paid or unless they decide to change it for a vacant number or unless it becomes vacant.
- 5.5 The Identification Number issued to a member shall become vacant if the member ceases to maintain their annual membership subscription by 30 January each year.
- 5.6 A vacant Identification Number must be offered to the previous holder before being allocated to another member.
- 5.7 There shall be only one craft displaying a particular identification number in any event.
- 5.8 Identification Numbers do not determine the order of start unless so stated in the Supplementary Regulations.
- 5.9 The colours, dimensions and placement of identification numbers are listed in 32.2 and 32.3.

## 6 EVENTS

- 6.1 The Management Committee shall be responsible for scheduling all events.
- 6.2 Classes
  - 6.2.1 The number of classes in an event shall be decided by the Management Committee.
- 6.3 Number of craft in a heat
  - 6.3.1 The maximum number of craft in a heat shall be decided by the Race Director.
  - 6.3.2 The Race Director may decide to conduct a heat in more than one group of craft.
  - 6.3.3 Craft shall interchange between these groups according to performance. The last two craft in Group A being relegated to Group B and the first two craft from Group B being promoted to Group A.



## 6.4 Entry

- 6.4.1 Entry in an event is restricted to holders of valid competition licence.
- 6.4.2 The organiser has the right to accept or reject any entry in an event.
- 6.4.3 The entry fee for participation in each event shall be decided by the Management Committee before the first event of the Championships.
- 6.4.4 The entry fee for an event shall be stated in the Supplementary Regulations.
- 6.4.5 A craft may be entered more than once in an event.
- 6.4.6 An entry in an event presumes that a competitor is aware of the competition Rules, the specifications and the Supplementary Regulations of that event.
- 6.4.7 An entry in an event shall be received by the closing date and time stated in the Supplementary Regulations.
- 6.4.8 Intending competitors in the Avon Descent have not previously competed in the event shall be required to compete in two Club events or participate in all three (3) of:
  - 6.4.8.1 *A Club Training Day.*
  - 6.4.8.2 *The Official Avon Descent Time Trial Event. (Two Sundays prior to the event weekend).*
  - 6.4.8.3 *One of the Official Avon Descent practice sessions on either Saturday afternoon or Sunday morning.*

Or compete in one Club event AND participate in any two (2) of these three events:

- 6.4.8.4 *A Club Training Day.*
- 6.4.8.5 *The Official Avon Descent Time Trial Event. (Two Sundays prior to the Event weekend).*
- 6.4.8.6 *One of the Official Avon Descent practice sessions on either Saturday afternoon or Sunday morning.*
- 6.4.9 Members intending to compete in the Southern Screamer and who have not previously competed in the event shall be required to compete in one Club river race.
- 6.4.10 A competitor who is considered by the Management Committee to be of sufficient proficiency may be allowed entry to the Avon Descent.
- 6.4.11 The Management Committee reserves the right to refuse entry in the Southern Screamer to a crew they determine to be not of sufficient proficiency to safely enter the event.

## 6.5 Officials

6.5.1 Each event shall have the following Officials:

- 6.5.1.1 *Race Director.*

- 6.5.1.2 *Timekeeper / Lap Counter / GPS Monitor.*
- 6.5.1.3 *Scrutineer.*
- 6.5.1.4 *Starter / Finish Marshal.*
- 6.6 **Plurality of duties**
  - 6.6.1 If so decided by the Organiser, a person may fulfil the role of more than one of the above listed tasks.
- 6.7 **Rescue / recovery**
  - 6.7.1 A rescue / recovery craft shall be available at each event.
- 6.8 **Pit area**
  - 6.8.1 Each event shall have a pit area that shall be defined in the Supplementary Regulations or Specified at the drivers briefing on the morning of the event.
  - 6.8.2 **Pit Area Rules**
    - 6.8.2.1 *No Smoking in Pit area.*
    - 6.8.2.2 *No Alcohol consumption in pit area.*
    - 6.8.2.3 *A power tool area will be located separate to the pit area for all repairs requiring power tools.*
    - 6.8.2.4 *Timed repairs to a motor are restricted to the pit area or allocated repair area only.*
    - 6.8.2.5 *Any tools may be used in the repair. Cordless tools are allowed.*
    - 6.8.2.6 *Two (2) people only are allowed to use the tools to repair.*
    - 6.8.2.7 *One (1) person using the tools has to be from the crew that race that craft.*
    - 6.8.2.8 *One (1) person is allowed to pass parts or tools but shall not do any of the repairs.*
    - 6.8.2.9 *The total time elapsed in the replacement or repair of a part, or parts shall be recorded. There shall be no stopping of the timing (however, see below). Multiple repairs may be able to be stopped depending on the repair and at the discretion of the Race Director or Scrutineer.*
    - 6.8.2.10 *Repairs that require a part to be taken away from the Pit Area shall attract a penalty of five minutes in addition to the time recorded to remove and refit the part.*
    - 6.8.2.11 *Timed repairs will be done at a time and place allocated by the Race Director or Scrutineer.*
    - 6.8.2.12 *Consumption of intoxicants is not allowed.*
  - 6.8.3 The details of the right to enter and remain in a pit area shall be stated in the Supplementary Regulations of an event.
- 6.9 **Classes**

- 6.9.1 There shall be three (3) classes of competition:
  - 6.9.1.1 *Group A Boats*
  - 6.9.1.2 *Group B Boats*
  - 6.9.1.3 *Formula Mini*
- 6.9.2 Craft conforming to all the specifications of these Specifications and comply with section 34 to 35.7.
- 6.9.3 Provided there is a minimum of three (3) craft on the water to contest a heat or event, the minimum number of craft to constitute a class for points is 2.
- 6.9.4 The Race Director has the final say in the eligibility of the additional craft, if required, that will enter to comprise the third entry.
- 6.9.5 The additional craft will not be eligible for points. plaques or prizes for that event.

## 7 OFFICIALS

### 7.1 Race Director

- 7.1.1 The organiser shall appoint a Management Committee approved Race Director for an event.
- 7.1.2 The Race Director shall be responsible for the conduct of the event.
- 7.1.3 The Race Director shall report all protests to the Management Committee as soon as practicable.

### 7.2 Scrutineer

- 7.2.1 The Scrutineer shall have the ultimate responsibility for the scrutineering of each event.

### 7.3 Starter / Finish Marshal

- 7.3.1 The Organiser shall appoint a Starter / Finish Marshal for an event.
- 7.3.2 The Starter / Finish Marshal shall have assistant marshals as required.
- 7.3.3 The Starter shall start the event.
- 7.3.4 The Finish Marshal shall be present at the finish of an event or nominate an Assistant Marshal to be present to record the completion of each competing craft.

### 7.4 Judge

- 7.4.1 The Organiser shall appoint a Judge for an event, if required.
- 7.4.2 The Judge may have Assistant Judges as required.
- 7.4.3 The Judge and Assistant Judges shall decide whether a craft has touched a buoy or passed a line, or some other fact as described in the Supplementary Regulations.

7.4.4 The decision of a Judge or Assistant Judge maybe altered only by protest or appeal.

## 7.5 Timekeeper

7.5.1 The Organiser shall appoint a Timekeeper for an event.

7.5.2 The Timekeeper shall be responsible for all aspects of timing an event.

7.5.3 The Timekeeper may have Assistant Timekeepers as required.

## 7.6 Plurality of duties

7.6.1 The organiser may decide that the same person may undertake several of the listed duties.

## 7.7 No alcohol

7.7.1 Members designated as an Official at any Club event must not consume alcohol while any craft is on the water and Officials are performing their duties.

# 8 SCRUTINEERING

8.1 Scrutineering requirements have been designed for the following reasons:

8.1.1 To provide safety for all competitors

8.1.2 To provide a standard to facilitate scrutineering

8.1.3 To comply with the Government Department requirements as stated in the NWR.

8.1.4 To aid Officials at an event

8.1.5 To allow all competitors to compete on an equal basis with other craft in their class.

# 9 PRE-EVENT SCRUTINEERING

9.1 Each craft entered in an event shall be presented at pre-event scrutineering in start line condition.

9.2 Any modification, substitution, addition or deletion from such condition shall be passed by the Event Scrutineer before the start of an event.

9.3 At pre-event scrutineering each craft shall meet the requirements of the Specifications as applicable to the class in which it is entered.

9.4 A craft shall meet the scrutineering requirements on each day of an event.

9.5 A craft that fails to meet the scrutineering requirements before the start of each day of an event shall be withdrawn from the event by the Scrutineer until all scrutineering requirements have been met.

## 10 POST-EVENT SCRUTINEERING

- 10.1 Post event scrutineering shall be conducted after a review of collated GPS data and the application of time penalties as outlined by the Supplementary Regulations for the event.

## 11 PRODUCTION OF TECHNICAL SPECIFICATIONS

- 11.1 If the full technical specifications for a motor or craft are not publicly available, then it is the responsibility of the competitor racing that motor or craft to provide the complete list of measurements required (as a list in the technical specifications section of this manual) fourteen (14) days prior to pre-event scrutineering or make alternative arrangements with the Rules Committee fourteen (14) days prior to the commencement of the event.

## 12 START, FINISH, TIMING, FLAGS AND BUOYS

### 12.1 Start / Finish

- 12.1.1 The method of starting shall be as stated in the Supplementary Regulations for an event and if not stated shall be either of:

12.1.1.1 *Mill starts on the water.*

12.1.1.2 *Standing start from land.*

12.1.1.3 *A craft shall not cross the start line before the start signal.*

12.1.1.4 *A craft shall be judged to have crossed a start line or finish line at the moment the bow has passed that line.*

12.1.1.5 *The penalty for a false start shall be a 60 second penalty added to the elapsed time of the offending craft, or such other penalty as stated in the Supplementary Regulations.*

12.1.1.6 *Re-rounding of buoys or start line shall not prevent the penalty being applied and shall not be permitted.*

12.1.1.7 *A circuit race shall be re started if in the opinion of the Race Director the Identification Numbers of the craft cannot be accurately judged.*

12.1.1.8 *Supplementary Regulations shall stipulate whether the motor shall be running or stopped before the start.*

12.1.1.9 *A circuit race shall be re started if in the opinion of the starter / judge / race director, 50% of the field has broken the start.*

### 12.2 Timing

- 12.2.1 The timing shall commence on the display of the start signal regardless of the position of a craft at the moment of display.

### 12.3 Mini Jet GPS Tracking System

12.3.1 The GPS tracking system referred to in section 36.1 shall be approved annually for the following racing calendar year.

12.3.2 That approval shall be made by majority vote at the Club Annual General Meeting.

12.3.3 Loss of data for any event shall be deemed as a non-result in all racing events.

### 12.4 Location and acknowledgement of flags

12.4.1 A driver shall give a signal of acknowledgement that they have seen a flag, or flags displayed at the start / finish position as they pass that point.

#### 12.4.2 Checkered flag

12.4.2.1 *Finish. In a circuit race it shall be shown stationery or waved to the first craft as it crosses the finish line and then in succession to each other craft as they next cross the finish line after the first craft regardless of the lap they may be on.*

#### 12.4.3 Black flag

12.4.3.1 *Excluded from that and any points gained shall not count. (Not disqualified from the event).*

12.4.3.2 *The flag shall be pointed directly at the offending craft which shall be removed from the water safely and directly.*

#### 12.4.4 Red flag

12.4.4.1 *Clear the course in a circuit race. Stop in a river race.*

#### 12.4.5 Yellow flag

12.4.5.1 *One lap to finish in a circuit race. Caution in a river race.*

#### 12.4.6 Orange flag with white stripe

12.4.6.1 *Caution in a circuit race.*

#### 12.4.7 White flag with black cross

12.4.7.1 *Error (boatakhana).*

#### 12.4.8 Buoys

12.4.8.1 *Used as required to demarcate the racecourse for the day.*

## 13 INTOXICANTS

13.1 Competitors shall not consume any intoxicants less than six (6) hours before the start of an event and until they have finished the days racing.

13.2 Intoxicants shall not be consumed in the pit area during a one (1) day event.

- 13.3 The Race Director may cause a competitor to be tested to ensure that their blood alcohol content does not exceed 0.00 and if it does preclude them from entry in or disqualify them from an event.
- 13.4 Failure to comply with section 13.1 and 13.2 will result in disqualification from the event.

## 14 ENVIRONMENT AND LITTERING

- 14.1 The Club aims to protect the environment at all times.
- 14.2 A team that deliberately commits any action that has an adverse effect on the environment shall be penalised as provided in section 20.
- 14.3 A team that litters shall be penalised as provided in section 20.

## 15 ILLEGAL ASSISTANCE

- 15.1 A competitor shall not accept assistance from the public or a support crew that takes their craft nearer the finish including following in the wake of other non-competing craft.
- 15.2 Competitors may assist other competitors if the way is blocked.
- 15.3 Competitors may assist other competitors in the case of impending physical danger.
- 15.4 Failure to comply shall result in a penalty in accordance with section 20.

## 16 WITHDRAWALS

- 16.1 A team that withdraws from any event must notify an Official immediately.
- 16.2 Failure to notify withdrawal shall result in a penalty in accordance with section 20.

## 17 PROTESTS

- 17.1 Right to protest
  - 17.1.1 The right to protest lies solely with any competitor who may consider themselves aggrieved or affected by any decision, act or omission of an Official, competitor or any other person connected with an event except that there shall be no right to protest against a judgement of fact.
- 17.2 Definition of a fact
  - 17.2.1 A fact for the purpose of above is a requirement of the competition Rules, the specifications and / or the Supplementary Regulations of an event.

### 17.3 Action of official

17.3.1 Nothing in these Rules shall affect or prejudice the right and duty of any Official to take such action as they may deem proper regardless of whether a protest has been lodged.

### 17.4 Lodging a protest – to whom directed

17.4.1 A protest shall be in writing, signed by the competitor making the protest, accompanied by the fee of one hundred dollars (\$100.00) or such amount determined from time to time by the Management Committee which will be stated in the Supplementary Regulations and be directed to the Race Director.

### 17.5 Withdrawal of a protest

17.5.1 Nothing in these Rules shall prevent the withdrawal of a protest before its hearing. The fee shall be returned if the protest is withdrawn.

### 17.6 Time limit for protest

17.6.1 A protest as to the validity of an entry shall be lodged not later than one (1) hour before the start of an event.

17.6.2 A protest of this nature shall be required to specify the details of such alleged ineligibility and shall not otherwise be accepted.

17.6.3 A protest against mistake, irregularity or act to the prejudice of an event or other matter occurring or becoming apparent while the event is taking place (including a penalty applied to a team) shall be lodged as soon as possible after the occurrence but in any case, not later than thirty (30) minutes after the finish of the event and shall not otherwise be allowed.

17.6.4 In the case of a protest arising out of post event scrutineering, the protest shall be lodged within thirty (30) minutes of scrutineering results being announced.

### 17.7 Competing under protest

17.7.1 After the lodging of a protest the team aggrieved shall retain their position in the event, including start grid position pending the outcome of the protest.

### 17.8 Adjudication of protest

17.8.1 A protest relating to the validity of an entry, ineligibility of a craft, non-compliance with the specifications or similar technical matter relating specifically to the boat or motor shall be referred to the Management Committee for hearing.

17.8.2 A protest shall be heard by a Protest Tribunal consisting of:

17.8.2.1 *The Race Director, who shall be the chairperson (replacement is a member of the Organising Committee).*

17.8.2.2 *Two (2) members of the Organising Committee (replacement is a member of the Management Committee).*



17.8.2.3 *No person may sit on a protest tribunal who may be or has been directly concerned or involved in the matter under consideration.*

## 17.9 Hearing of protests

17.9.1 The protest hearing shall take place as soon as practicable after the lodging of the protest.

17.9.2 All parties aggrieved or affected shall be given twenty-four (24) hours' notice by the chairperson of the time, date and place of the protest hearing unless all parties agree to less notice.

17.9.3 They shall be entitled to call witnesses but shall state their case in person.

## 17.10 Judgement of a protest

17.10.1 All parties aggrieved or affected by the decision of a protest tribunal shall be bound by the decision subject only to appeal as provided in these rules.

## 17.11 Forfeiture of protest fee

17.11.1 Unless otherwise decided by the protest tribunal for special reasons the protest fee shall normally be forfeited if the protest is dismissed.

17.11.2 If a protest results in a motor being stripped, and the protest subsequently dismissed, the protest fee shall be awarded to the team whose motor is stripped.

# 18 APPEALS

## 18.1 Right to appeal

18.1.1 Persons aggrieved or affected by the decision, or a protest tribunal (competitors or Officials) have the right to appeal against the decision only.

## 18.2 Time limit for appeal

18.2.1 An appeal shall be in writing, signed by the appellant, accompanied by the fee of \$100.00 and delivered to the Chairperson of the protest tribunal within one hour of the decision.

18.2.2 The Chairperson shall advise the secretary of the appeal as soon as practicable.

18.2.3 The details of the appeal shall be lodged with the Secretary within seven (7) days of the decision of the protest tribunal.

## 18.3 Competing during appeal

18.3.1 After the lodging of an appeal the team aggrieved shall retain their position in the event, including start grid position, pending the outcome of the appeal.

## 18.4 Adjudication of appeal

18.4.1 An appeal will be heard by an Appeal Tribunal selected from the Management Committee.

18.4.2 No person may sit on the Appeal Tribunal who may have already participated in a decision on the matter in question or who may directly or indirectly be concerned in it.

## 18.5 Hearing of an appeal

18.5.1 The hearing of an appeal shall take place as soon as practicable after the decision of the protest tribunal.

18.5.2 All parties aggrieved or affected shall be given adequate notice by the Chairperson of the Appeal Tribunal of the time, date and place of the appeal hearing.

18.5.3 They shall be entitled to call witnesses but shall state their case in person.

18.5.4 It is incumbent on the appellant to obtain details of the protest hearing from the chairperson of the protest tribunal, if required.

## 18.6 Judgement of an appeal

18.6.1 The decision of the Appeal Tribunal shall be final.

## 18.7 Appeal fee

18.7.1 Unless otherwise decided by the Appeal Tribunal for special reasons the appeal fee shall normally be forfeited if the appeal is dismissed.

# 19 SERIOUS BREACHES

19.1 The following are considered serious breaches:

19.1.1 Environmental damage including littering and felling of trees.

19.1.2 Refuelling outside official refuelling areas.

19.1.3 Incorrect refuelling procedures.

19.1.4 Incorrect disposal of waste fuel.

19.1.5 Beach landings.

19.1.6 Failure to render assistance in an emergency situation.

19.1.7 Consumption of intoxicants six (6) hours before the start of each day's racing and / or before leaving the water.

19.1.8 Passing a checkpoint with an injury requiring medical assistance.

19.1.9 Failure to notify withdrawal.

19.1.10 Failure to follow the reasonable request of an Official.

19.1.11 Failure to leave the water after having been withdrawn by an authorised Official.

19.1.12 Abuse of an Official.

19.1.13 Failure to obey an official flag.

19.1.14 Acting in a manner detrimental to other competitors.

19.1.15 Continued and deliberate exceedance of maximum stated class speeds.

## 19.2 Penalties of serious breaches

19.2.1 Cancellation or suspension of Club competition licence.

19.2.2 Time penalty (not set maximum).

19.2.3 Monetary fine (\$250.00 maximum).

19.2.4 Membership expulsion.

## 20 PERFORMANCE BREACHES

20.1 The following are considered performance breaches:

20.1.1 Incorrect start procedure.

20.1.2 Incorrect portage.

20.1.3 Accepting illegal assistance.

20.1.4 Interference with other competing craft.

20.1.5 Unauthorised repairs to motors.

20.1.6 Non-compliance with the technical specifications.

20.1.7 Non-compliance with section 8 of the Specifications.

20.1.8 Unintentional exceedance of maximum stated class speed.

## 20.2 Penalties for performance breaches

20.2.1 The maximum penalty for these breaches is a time penalty of fifteen (15) minutes except for a breach of rule 2313 and / or 2315 which maybe a time penalty (no maximum) a monetary fine (maximum \$250.00) or both, or disqualification.

## 21 OTHER BREACHES

21.1 The following are considered performance breaches:

21.1.1 Unauthorised practice after the start of an event.

21.1.2 Failure to place a craft in a pit area immediately after finishing each day's racing.

21.1.3 Unauthorised entry to the pit area during closed time.

21.1.4 Unauthorised removal of a craft from the pit area.

21.1.5 Smoking in the pit area.

21.1.6 Failure to present a craft in start line condition at pre-event scrutineering.

21.1.7 Non-compliance with the specifications on each day of an event.

21.1.8 Unauthorised replacement of competitors.

21.1.9 Non-compliance with the competition rules.

## 21.2 Penalties for other breaches

21.2.1 The penalty for other breaches may range from a warning to a maximum fine of \$100.00, or a time penalty (no set maximum) or any combination of the two.

## 22 POWER TO IMPOSE A PENALTY

22.1 In an event the Race Director shall have the power to impose a penalty.

22.2 In other circumstances the Management Committee shall have the power to impose a penalty.

## 23 APPLICATION OF A PENALTY

23.1 In the consideration of the application of a penalty towards a team for a breach of these Rules it shall not be considered an excuse, defence or mitigation factor that the member of the team was unaware of the existence of the rule.

## 24 NOTIFICATION

24.1 The imposition of a penalty may be advised verbally.

24.2 This verbal notification shall be confirmed by written notification from the Race Director or Management Committee stating the alleged breach and quoting the specific competition rule that is alleged to have been breached and the penalty applied and quoting the specific competition rule giving authority for the application of the penalty as soon as possible after the verbal notification is given.

## 25 UNPAID FINES

25.1 Should a fine be imposed for a breach of these rules and that fine is not paid before a subsequent event, entry into that event shall be refused by the organiser until the fine is paid.

## 26 MINI JET WA CHAMPIONSHIPS AND PERPETUAL TROPHIES

26.1 The Mini Jet WA Championships are open to all financial members of the Club.

26.2 The Club Championships shall be comprised of a series of events.

26.3 The events in the series shall be decided by the Management Committee before the first event.

- 26.4 Along with registering a boat entry for the Championship season, a racing class along with two crew members shall be nominated.
- 26.5 For that craft be eligible for Championship points for any event throughout the year, one of the two nominated competitors shall be the driver.
- 26.6 A competitor who has been disqualified from an event at any time throughout the years is ineligible for the Club Championship.
- 26.7 To be eligible for the Club Championship a competitor shall officiate in one event of the series, serve on the Club Committee, or perform some other service to the Club to the satisfaction of the Management Committee.
- 26.8 The Club shall award the following perpetual trophies:
  - 26.8.1 Club Champion – Outright.
  - 26.8.2 Champion - 2 Cylinder 2T, 3 Cylinder 4T (up to 1051cc) and Electric Combined.
  - 26.8.3 Champion - 3 Cylinder 2T and 4 Cylinder 4T up to maximum stated HP.

## 27 POINTS

- 27.1 Points for each event of the Championship shall be allocated as follows: 1st 100, 2nd 80, 3rd 70, 4th 60, 5th 50, 6th 45, 7th 40, 8th 35, 9th 30, 10th 25, 11th 20, 12th 15, 13th 10, 14th 5.
- 27.2 Starting but not finishing one point (for non-place getters) Finishing, in addition to starting, but outside 14th place five (5) points.
- 27.3 Points for the Avon Descent shall be as per section 28.1.
- 27.4 The secretary shall keep a register of points gained and shall ensure that this register is available on all occasions where points are allotted.

## 28 EVENT TROPHIES

- 28.1 Trophies or plaques shall be awarded for individual events of the Championships.
- 28.2 Commodore's trophy
  - 28.2.1 The perpetual Commodores Trophy shall be awarded to the member who is nominated by any financial member of the Club and selected by the Commodore to have contributed most to furthering the aims of the Club.
  - 28.2.2 Points shall be awarded regardless of the number of entries provided there is enough to make a class.
  - 28.2.3 Points are not transferrable or interchangeable between the Championships.

## 29 SWIMMING TEST

### 29.1 Requirements

29.1.1 A competitor must complete the swimming test under the following conditions:

29.1.1.1 *A 150-metre swim test within ten (10) minutes.*

29.1.1.2 *A helmet and footwear shall be worn.*

29.1.1.3 *A lifejacket (PFD) shall not be worn.*

29.1.1.4 *A wetsuit shall be worn.*

### 29.2 Period of validity

29.2.1 The swimming test shall be valid until the expiry of a competitor's competition licence.

### 29.3 Supervision

29.3.1 A swimming test shall only be conducted in conjunction with pre-event scrutineering for events of or other time and venue approved by the Management Committee.

29.3.2 Swimming tests shall not be held in a swimming pool.

29.4 Certificates from other clubs, societies or associations will not be considered as exemptions from the swimming test.

## 30 COMPETITION LICENCES

### 30.1 Eligibility

30.1.1 A person applying for a Club competition licence shall:

30.1.1.1 *Be a financial member.*

30.1.1.2 *Be not less than fourteen (14) years of age.*

### 30.2 Requirements

30.2.1 An applicant for a Club competition licence shall fulfil the following requirements:

30.2.1.1 *Pass the Club swimming test upon joining the Club and must swim annually after having attained the age of seventy (70) years.*

30.2.1.2 *Pass the Club swimming test, if their competition licence has lapsed for a period of greater than five (1) years.*

30.2.1.3 *Pay the annual fee.*

30.2.1.4 *Compete in a craft that has paid the annual Insurance Premium.*

30.2.1.5 *One competitor per craft must hold a current Recreation Skippers Ticket (RST).*

30.2.2 Period of validity

30.2.3 The fee for the Club competition licence shall be determined by the Management Committee.

### 30.3 Lapse of Club competition licence

30.3.1 The period of validity shall lapse if the annual fee and / or Insurance Premium is not paid within thirty (30) days of the date of expiry.

### 30.4 Cancellation / suspension

30.4.1 A Club competition licence may be cancelled or suspended by the Management Committee for a serious breach of these rules or for conduct, not necessarily in an event, contrary to the good image and repute of the Club.

### 30.5 Re-examination / re-issue

30.5.1 A Club competition licence holder shall complete the swim test at the expiry of the period of validity before the licence is re-issued.

30.5.2 If a Club competition licence is cancelled, all the test requirements shall again be satisfied before it is re-issued.

## 31 GENERAL LICENCE

31.1 To obtain this grade of Club competition licence a competitor shall:

31.1.1 Be not less than seventeen (14) years of age as at the date of issue and have paid Club membership.

31.1.2 Fulfil the requirements for issue of a DOT RST.

31.1.3 Have completed the requirements of these Rules.

### 31.2 Mini Jet Novice

31.2.1 To obtain this grade of Club competition licence a competitor shall:

31.2.1.1 *Fulfil the requirements of section 31.*

31.2.1.2 *Be fourteen (14) years of age as at the date of issue.*

31.2.1.3 *Have completed less than five circuit (closed) events and no river race events.*

31.2.2 Mini Jet Novice have a maximum fifty (50) kilometres per hour for river racing events and maximum sixty (60) kilometres per hour for circuit racing events regardless of HP.

### 31.3 Mini Jet Expert

31.3.1 To obtain this grade of Club competition licence a competitor shall:

31.3.1.1 *Complete the requirements of section 31 and 32.*

31.3.1.2 *Be of seventeen (17) years of age as at the date of issue.*

- 31.3.1.3 *Have completed in minimum five (5) circuit (closed) events and successfully completed a river race.*
- 31.3.2 Mini Jet Expert licence issue / removal can be at the discretion of the Management Committee on a performance, tenure and safety review basis.
- 31.3.3 Mini Jet Expert have a maximum sixty-five (65) kilometres per hour for river racing events and maximum seventy (70) kilometres per hour for circuit racing events regardless of HP.

## 32 INSURANCE

- 32.1 Each Competitor in an event shall have paid the craft insurance.
- 32.2 Insurance premiums shall be paid on a per craft basis.
- 32.3 The premium for each craft's Insurance is payable annually (1 January to 31 December).
- 32.4 The insurance premium for each craft is payable annually regardless of the period for which the fee is paid.
- 32.5 The Insurance Fee must be paid prior to any craft being permitted to race in any given season or event.
- 32.6 In the event of any competitors lodging an Insurance claim, that particular craft will incur an additional insurance premium if the members of the craft are not the original members of the craft.
- 32.7 The Club Insurance Policy shall not be substituted by other Insurance Policies regardless of their provisions.
- 32.8 The premium shall be paid before a competition licence is issued or re-issued.

## 33 AMENDMENT OF COMPETITION RULES

- 33.1 Any amendment, deletion, addition or change of meaning to any part of these Rules must be ratified by resolution of a majority of the financial members present at a General Meeting.
- 33.2 Members must be notified in writing of any proposed amendments, deletion, addition or change of meaning to any part of these Rules at least seven (7) days prior to the General Meeting.



- 33.3 Any Competition Rule or Specification that has been amended, deleted, added or changed in meaning by means shall not be amended, deleted added or changed in meaning again until at least twelve (12) months after the first amendments, deletions, addition or changes in meaning, unless safety or regulatory impositions apply.
- 33.4 For the purposes of 31.3, notification in the Club newsletter / email of any proposed amendment, deletion, addition or change of meaning to any part of these Rules shall be sufficient but not obligatory providing such notification occurs seven (7) days before the General Meeting.

## 34 VESSEL SPECIFICATIONS

### 34.1 Registration

- 34.1.1 Each craft in an event shall be registered with the government department responsible for licensing marine vessels and comply with their requirements as follows:

- 34.1.1.1 *The registration number shall be displayed on each external side of the hull adjacent to the transom.*
- 34.1.1.2 *Each digit of the registration number shall be black and shall not be less than 150mm in height and not less than 25mm in width.*
- 34.1.1.3 *Each digit of the registration number shall be vertical and shall have a 10mm white surround.*
- 34.1.1.4 *Registration sticker fixed to the port (left) side next to the registration number.*
- 34.1.1.5 *The identification plate (HIN plate) shall be affixed to the hull as per DOT regulations.*



### 34.2 Novice class identification numbers

- 34.2.1 Each craft shall display an identification number that shall:
- 34.2.1.1 *Be not less than 400 x 210mm for the background.*
- 34.2.1.2 *Be non-slanting and naturally spaced.*
- 34.2.1.3 *Be formed in Helvetica Condensed Bold font or other Management Committee approved similar font.*
- 34.2.1.4 *Be made from Neon Yellow Fuji Ca 12 long term adhesive vinyl 50 micron or Management Committee approved equivalent.*
- 34.2.1.5 *Be on a Black background of Fuji Ca 12 long term adhesive vinyl or Management Committee approved equivalent.*
- 34.2.1.6 *Not be displayed on a board on the craft.*
- 34.2.1.7 *Be clearly visible on both sides of the craft with the entire number on a surface of the craft forward of amidships.*

34.2.1.8 *No wrap around numbers allowed.*

### 34.3 Expert class identification numbers

34.3.1 Each craft shall display an identification number that shall:



34.3.1.1 *Be not less than 400 x 210mm for the background.*

34.3.1.2 *Be non-slanting and naturally spaced.*

34.3.1.3 *Be formed in Helvetica Condensed Bold font or other Management Committee approved similar font.*

34.3.1.4 *Be made from Bright RED (#DE1738) Fuji Ca 12 long term adhesive vinyl 50 micron or Management Committee approved equivalent.*

34.3.1.5 *Be on a White background of Fuji Ca 12 long term adhesive vinyl or Management Committee approved equivalent.*

34.3.1.6 *Not be displayed on a board on the craft.*

34.3.1.7 *Be clearly visible on both sides of the craft with the entire number on a surface of the craft forward of amidships.*

34.3.1.8 *No wrap around numbers allowed.*

### 34.4 Dimensions

34.4.1 The minimum hull length shall be 2,300mm and the maximum hull length shall not exceed 4,000mm.

### 34.5 Design and safety

34.5.1 The design shall be of a safe design and construction.

34.5.2 The hull shall contain an engine cover (hatch) and a bulkhead to separate the occupants from the engine compartment.

34.5.3 Hull and propulsion supporting structure can be made from aluminium or fiberglass or a combination of both.

34.5.4 Buoyancy must be added to a boat with a minimum available air volume of 0.2M<sup>2</sup> or 200L effective capacity.

34.5.5 Must be able to house two (2) occupants.

34.5.6 UHMWPE under-sheet for protection of hull shall be fitted for all river events for craft constructed solely from aluminium.

34.5.7 Coverage shall be not less than the keel of the hull at a width equal to the minimum of the delta at the widest point. Trimming of the UHMW is permissible to follow the hull shape to the point. See Reference Drawing No. 1 & 1A.

34.5.8 Painted, unpainted or wrapped hulls are permitted - colour is free.

34.5.9 Craft shall have a minimum of 1 operable dead man safety ignition cut system.

34.5.10A fire extinguisher of not less than one (1) kilogram is to be fitted in a safe and accessible location. Extinguishers must be tagged and in date.

- 34.5.11 Batteries must be of a fully sealed type and must be secured to the hull or bulkhead in a design fit to support the battery weight in the event of an accident or roll over.
- 34.5.12 Fuel tank is to be made from any metal. (aluminium/stainless steel etc) or constructed from an approved material found suitable for marine fuel tank applications.
- 34.5.13 Fuel tank capacity is limited to maximum of 80L. Fuel tanks must vent externally of the engine room and contain a one-way valve to prevent fuel escape in the event of submergence.
- 34.5.14 Fuel filling points must be of OEM type or those found acceptable for marine use.
- 34.5.15 Fillers must have an O ring seal and be non-venting type. It is recommended to have the fill point external of the engine room. Craft that have an internal fill point must have an operational bilge blower fitted.
- 34.5.16 A minimum of two (2) 300mm grab rails shall be fitted to the hull to allow for recovery and manoeuvring while on water. Grab rails to be fitted between the tip of the bow and the base of the windscreen. Additional grab rails can be fitted. The location of additional grab rails is free.
- 34.5.17 Each craft shall carry a minimum first aid kit including items from St John Medium Leisure Kit Part number 7652. Alternative safety kits can be used if the contents are the same.
- 34.5.18 Each craft shall have a tow rope. The tow rope must be not less than 10M in length and rated to not less than one tonne at 10 metres.
- 34.5.19 Each craft shall carry a throw rope safety bag for river racing events.
- 34.5.20 Exhaust outlet point must be rearward of the bulkhead by no less than 500mm and as low in the hull as practicably possible. The exhaust exit must face in a direction opposite to that of the normal direction of craft travel.
- 34.5.21 Bilge pump/pumps must be fitted to the engine compartment and have capacity of not less than 900GPH each.
- 34.5.22 Pumps must be fitted with a non-return valve if the discharge point is below the floating, stationary water line at race weight.
- 34.5.23 Bilge pumps must have a fully automatic operation by way of internal float, automatic time sensing or external float switch and must remain operable in the event that the motor is not running. Pumps can run continuously if switched on with main isolation switch if they are designed to do so.
- 34.5.24 It is recommended that a second bilge pump of not less than 500GPH be fitted in the occupant's compartment forward of the bulkhead and in the lowest point of the hull. If the bulkhead is fully sealed to the hull and side plates a bilge pump must be fitted to the forward compartment complying with section 35.5.21.

34.5.25 The use of the OEM bilge venturi system is acceptable only as addition to bilge performance. The OEM system alone is not permissible but if used as additional must be fitted with an inline check valve.

#### 34.6 Tow point

34.6.1 A tow point must be fitted no more than 150mm to the rear of the furthest forward point of the bow.

34.6.2 The tow point shall be of a solid structure not less than 8mm in thickness. It shall be shaped in a closed half circle with not less than 20mm and not more than 50mm internal diameter. It shall be capable of supporting the craft under tow when it is fully immersed in water.

34.6.3 A single rear tow point shall be fitted to the craft to be used for recovery or tow of other craft.

34.6.4 Craft fitted with rear bar work surrounding the pump shall be deemed as having a suitable tow structure.

34.7 The same craft with the exception of allowable replacement parts shall be used throughout an event.

#### 34.8 Additional equipment

34.8.1 Mini Jet boats shall comply these rules.

#### 34.9 Propulsion systems

34.9.1 Jet drive units only.

34.9.2 Fabricated sheet metal or cast aluminium tunnels are permitted.

34.9.3 The use of factory aluminium cast tunnels is NOT permitted in any river race.

34.9.4 The use of aftermarket jet impellers is permitted.

34.9.5 The maximum internal diameter of any housing including wear ring is 161mm.

34.9.6 Steering nozzles are free.

34.9.7 Intake screens are free.

34.9.8 Ride plates are free.

34.9.9 Trim of the steering nozzle is free.

34.9.10 The shortening of the drive coupler intermediate shaft is permitted.

34.9.11 Rubber drive couplers and flanges are free.

34.9.12 A maximum of twelve (12) veins may be used in the impeller duct assembly.

34.9.13 It is permitted to block the tell-tale or venturi outlet.

#### 34.10 Engines

34.10.1 Any two (2) or four (4) stroke marinized power plant is acceptable.

34.10.2 Electric motor driven jet units are permitted.



- 34.10.3 Forced induction is not permitted.
- 34.10.4 Removal of automatic oil injection systems is permitted.
- 34.10.5 The power plant shall have a manufacturer placard stating HP.
- 34.10.6 Exhaust systems are free in design, shape and size.
- 34.10.7 A wet exhaust muffler system (water box) with minimum of one baffle shall be installed.
- 34.10.8 No “dry piped” exhausts are permitted.
- 34.10.9 If the Club are running at an APBA event – craft noise is limited to 92Db as measured by the Officials on the day.

## 35 MINI JET CLASSES

- 35.1 Mini Jet class will utilise GPS speed data for maximum speeds for river events other than those craft specified in 35.7.
- 35.2 System to be approved by resolution of the Scrutineer.
- 35.3 The Scrutineer will be responsible for the data review and presentation of speeding events to the race director for results preparation within 30 minutes of the race finish for all craft.
- 35.4 Results of timing are as per section 28.1 of this document.
- 35.5 Group A Boats
  - 35.5.1 120HP and above in full compliance with this rule set and specifications. HP rating is taken from manufacturers published data.
- 35.6 Group B Boats
  - 35.6.1 Above 120HP and above in full compliance with this rule set and specifications. HP rating is taken from manufacturers published data.
- 35.7 Formula Mini
  - 35.7.1 Sea doo 900 “Ace” motors ONLY.
  - 35.7.2 Jet pumps are free up to 156mm diameter per 90HP configuration – no ECU tuning or modifications other than relocation.
  - 35.7.3 Air Filters are free (worx, K&N etc).
  - 35.7.4 Modifications to the inlet manifold and associated equipment is not permitted.
  - 35.7.5 Modifications to the exhaust manifold and components is not permitted other than to facilitate fitment to the hull.
  - 35.7.6 Wiring extension harness are free.
  - 35.7.7 Fuel Pumps and Regulators must be factory specification for the motor and unchanged.



- 35.7.8 Exhausts must retain the factory wet box muffler and baffle system.
- 35.7.9 Jet drive units only.
- 35.7.10 Cast Aluminium inlet tunnels or factory composite only.
- 35.7.11 The use of aftermarket jet impellers is limited to those commercially available only. The use of custom impellers is not permitted. Pitching of impellers is not permitted.
- 35.7.12 The maximum internal diameter of the pump housing is 156mm.
- 35.7.13 Steering nozzle must be factory issued.
- 35.7.14 Intake screens are as per supplier (ASP), or factory supplied only in the case of a composite tunnel being used.
- 35.7.15 Ride plates are free.
- 35.7.16 Trim of the steering nozzle is permitted with the factory system external of the hull, the operation of the factory trim system is free. (manual or electric).
- 35.7.17 The shortening of the drive coupler intermediate shaft is permitted.
- 35.7.18 Rubber drive couplers and flanges are free.
- 35.7.19 No modification to the impeller duct is permitted.
- 35.7.20 It is permitted to block the tell-tale or venturi outlet only.
- 35.8 Craft that do not comply with sections 36.7 through 36.7.20 may compete in the category but will be subject to GSP speed tracking and speed limit infringements as defined by the scrutineer.
- 35.9 A maximum speed will be nominated for non-compliant craft.

## 36 AVON DESCENT SPECIFIC REQUIREMENTS

36.1 There are additional Specifications to compete in the Avon Descent.

### 36.2 Safety Structure

36.2.1 A safety hoop structure shall be fitted behind the occupants on the same plane as the fire wall section. Safety hoop / hoops shall be of aluminium, construction, 38mm outer diameter and a wall thickness of not less than 3mm. The internal bend radius shall not be less than 150mm.

36.2.2 The hoop/hoops shall finish at a horizontal height above the gunwale that provides support to the rear of the helmet of the occupant and is in line centrally with the helmet centreline. See Reference Drawing No. 2.

36.2.3 The hoop/hoops shall be cold formed and attached to the firewall/gunwale by way of keeper plate above and below the attaching panel or fully welded. If bolted a minimum of six (6) bolts of Grade 8.8 and washers shall be used and the keeper plate shall be of minimum 6mm thickness and fully welded to the hoop structure.

### 36.3 Neck support

36.3.1 Occupants are required to wear an SFI 3.3 approved full neck collar along with all safety and clothing requirements outlined within these Rules.

### 36.4 Speeds and penalty

36.4.1 Excess of speed events totalling five (5) minutes will result in an ROF grid for the following day.

36.4.2 Excess of speed events totalling ten (10) minutes will result in a 'no-result' from the event.

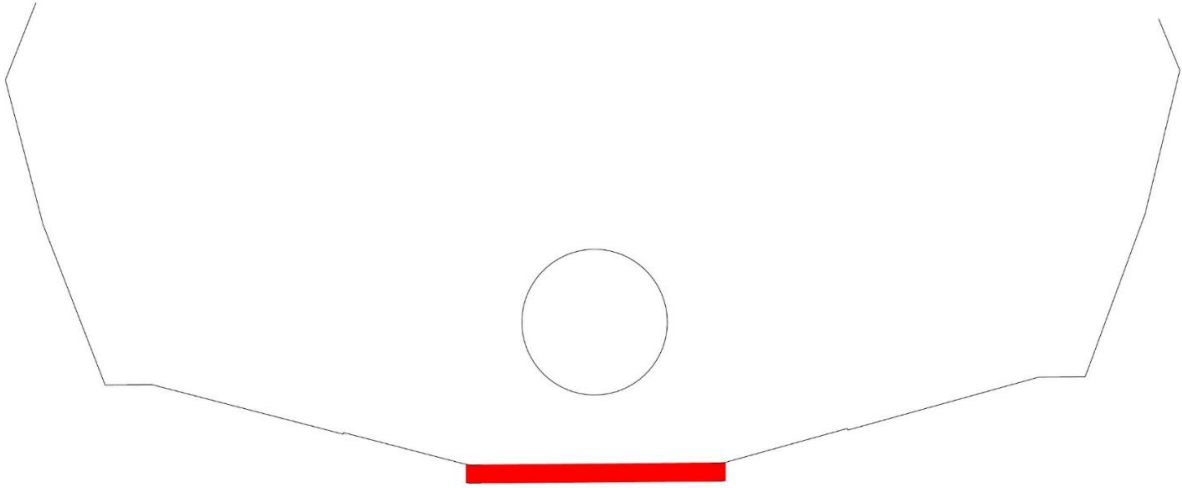
36.4.3 Excess of seventy (70) kilometres per hour at any time shall result in a twelve (12) month ban from the Avon Descent.

36.4.4 Novice Speed nominated at fifty-five (55) kilometres per hour – Penalties are incurred from 56 kilometres per hour.

36.4.5 Expert Speed nominated at sixty-five (65) kilometres per hour – Penalties are incurred from 66 kilometres per hour.

## 37 REFERENCE DRAWINGS

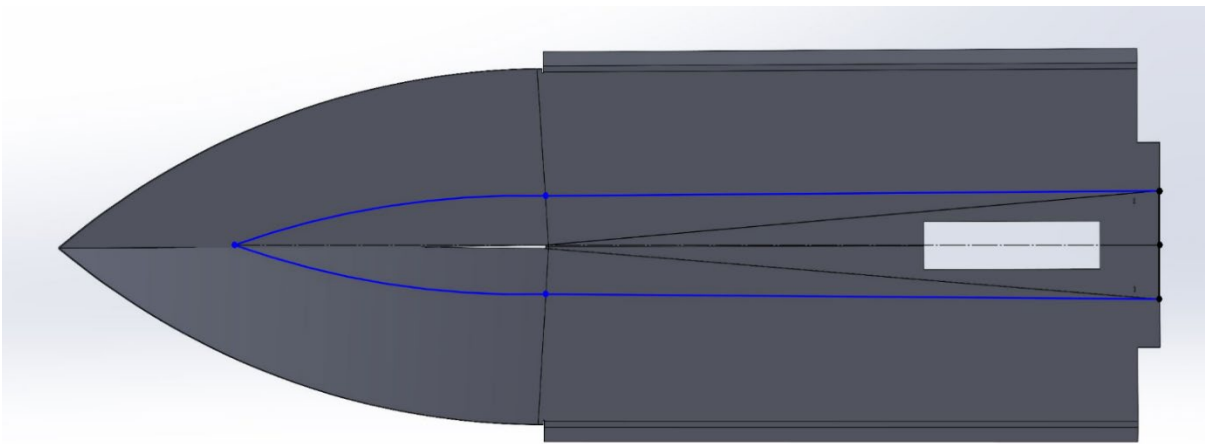
Reference drawing 1



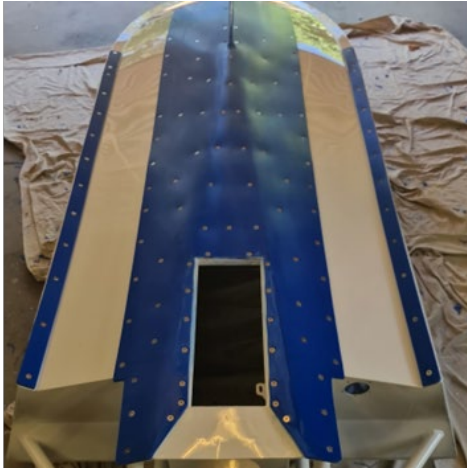
Rear Typical view showing wear plate on delta in RED shape.

Reference drawing 1A

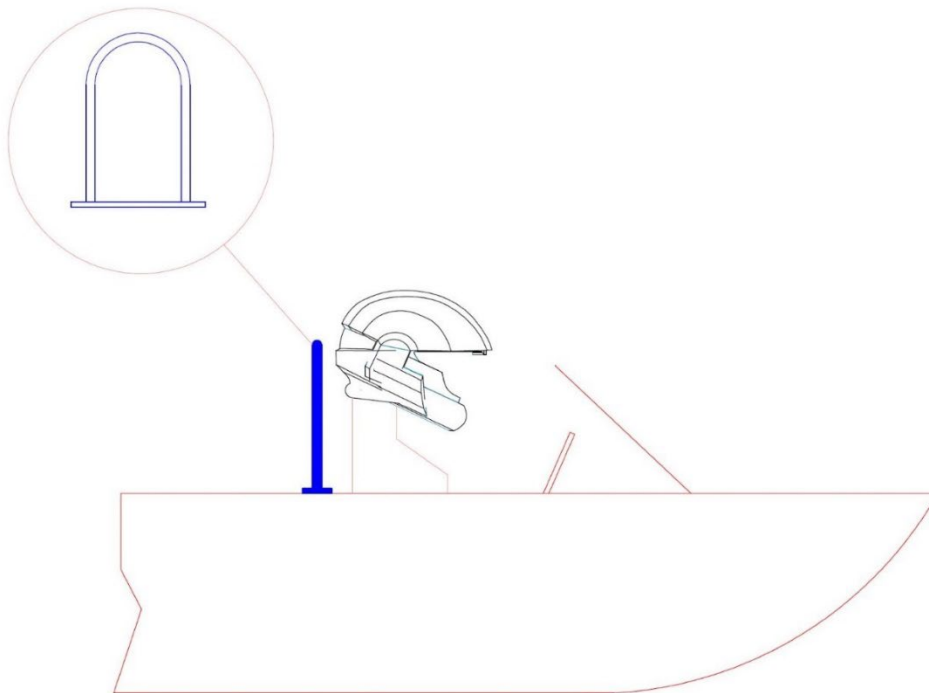
Underside of typical hull. BLUE line showing minimum wear plate coverage.







Reference Image of typical wear plate installation above  
Reference drawing 2



Side sketch of typical craft showing BLUE head protection loop fitted. Note top of loop is as close to centre of helmet for occupant as possible.