



Event Detail: 2024 Avon Descent Practice

When – August 3 and 4

Where – Northam > Cobbler Pool / Bells Rapids > Middle Swan Reserve

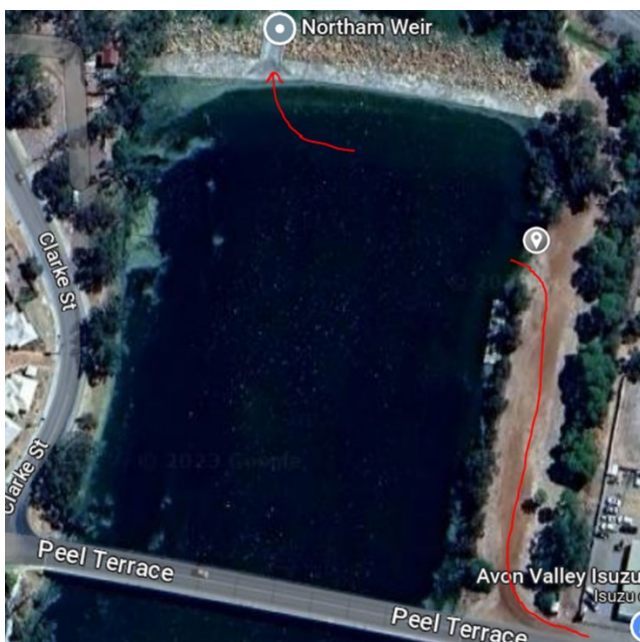
What to expect – This event is the practice event for the main Avon Descent Race the following weekend. Course maps can be found later in the document.

This event will require the driver and navigator to be in the craft, no single-occupant crafts will be allowed. Full River Race specifications are in play as per the rules and full craft scrutineering is required for both days of the event.

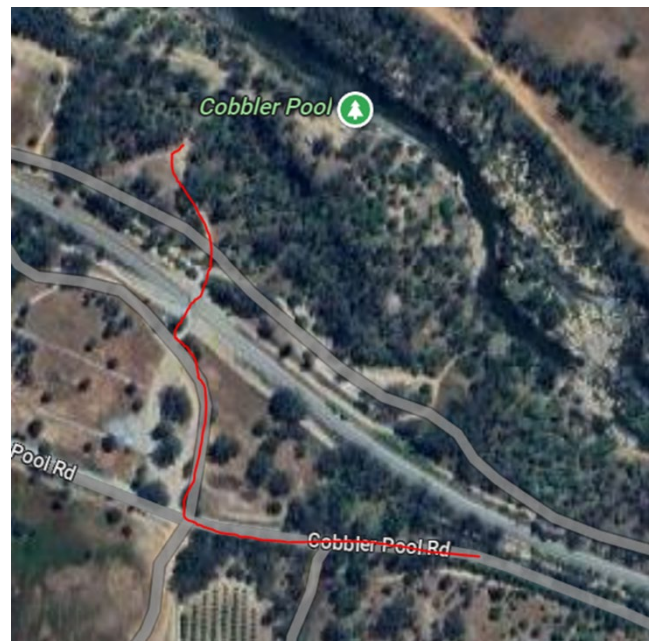
Below are the mapped areas for access and course locations– remember this is a shared facility, treat it with respect.

All members must remain diligent with outside traffic in the area such as pleasure craft, Paddleboarders, Canoes and the like, it is highly likely we will need to navigate other water users and mourned craft in the are, 50M minimum passing distance is required and if not possible all craft are to slow to 5Kts until minimum 50m clear.

Day 1 Launch and retrieve Map



Launch (-31.647 / 116.671)



Retrieve (-31.558 / 116.317)

This course will be run multiple times during the day with most teams expected to run a minimum of 2 times.

The last craft (sweep) will depart at 1500hrs, and this will be to complete a sweep of the river and ensure no craft are still on the water. GPS tracking will also be in use to assist any craft that has not completed the course. Recovery of craft will be done by way of towing to the nearest recovery location or a full tow to Cobbler Pool if craft is downstream of Extracts weir.

Day 1 Course Map

Below outlined in Yellow is the course for the day, starting from the Northam Weir and finishing at Cobbler Pool. This is the normal start and finish for Day 1 of the main race. All Blue markers are key areas and also vehicle access points for support crew to view craft or conduct a craft retrieval if required.



Day 2 Launch and retrieve Map

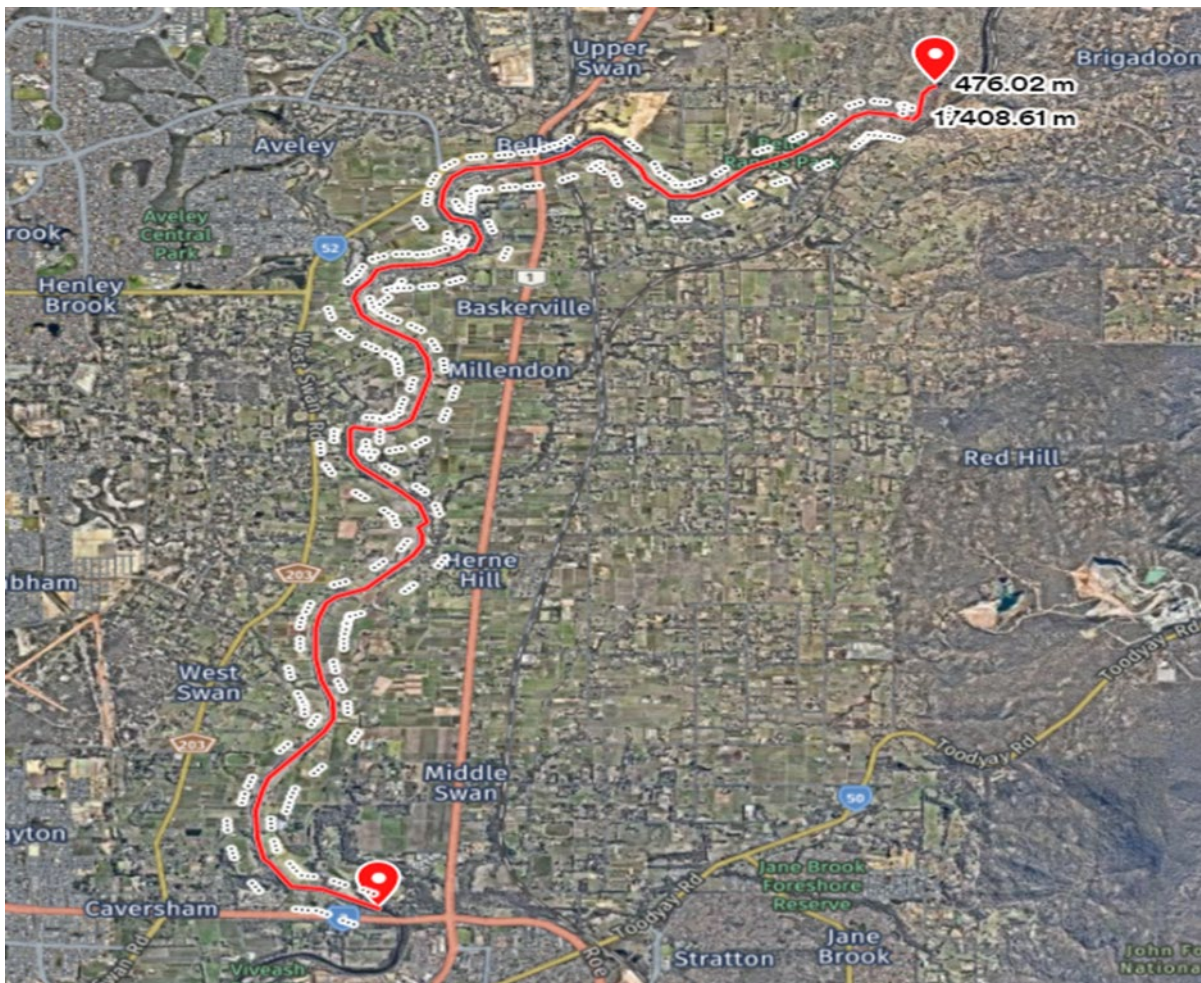


Launch – Bells Lower Carpark
(-31.773 / 116.060)



Retrieve – Middle Swan Reserve
(-31.863 / 116.007)

Day 2 Course Map



Practice Procedure

Day 1 – All craft will meet at the carpark river right for scrutineering and drivers briefing. Support crews will be given course map and viewing/support locations as well as communication advice and confirmation of GPS connectivity and tracking. All craft to depart together and complete the first trip down river as a team. No one craft is to speed off from the group. This first trip is considered a sighting pass for all craft and crews. Following trips will be at teams pace, last craft to run will be the sweep boat at 1500hrs to check course and close off the practice session for the day.

Day 2 – All craft will meet at the lower bells carpark for scrutineering and drivers briefing with crews. GPS check and confirm once again. Sweep craft to depart and all other craft to hold until all clear is given back to Bells location. All remaining craft to leave together and conduct first pass down river together for sighting. Subsequent passes will be individual as required. Sweep craft to complete last pass at 1500hrs and clear course.

Communications – All craft carry GPS in boat with all crews able to see all craft. All craft to carry minimum 1 mobile phone. Sweep craft also carry sat phone. Support crews to exchange phone numbers with all members on water. Support crew of Sweep boat is main contact for all activities on and off water or event director.



Supplementary Regulations: 2024 Avon Descent Practice

Date: August 3 & 4

Location: Per Above

Event Type: Expedition

Craft: Mini Jet Only

Director: Scott Hayto / Brad Cuss

Sweep: 1 or 2 craft

Entry: TBC

Price: TBC

- This event is offroad ramp access – 4wd Vehicles only
- Race signage will be in use at all access points
- Craft Scrutineering from 0800 – all craft must attend and be in race prep condition as per the rules. Wear plates under hulls is required and Roll hoops are required for the event.
- Event and safety brief will be at 0900
- Course is as per Maps found above and subject to change on the day for reasons determined by the race officials or water conditions
- Support Crews are mandatory for this event
- Flags will not be in use
- Teams can bring a BBQ to the beach for lunch – All rubbish must be taken with you
- Day 1 check points as noted in Blue. If your craft does not pass the check point you wait at that point for recovery.
- Craft landing area will be Cobbler Pool and Middle Swan Reserve
- No fuelling of craft within 50m of the waterway – boats must be removed from the water
- This event does not contribute race points to the season per the rules
- Emergency procedures as per event approvals and contact details in event folder
- Prizes will be not be awarded for the day

First Aid Support

MJWA will have 2 senior First Aid persons in GREEN reflective vests. These persons will be at the launch and retrieve locations on both days. The phone number of these persons will be shared with support crews and competitors.