

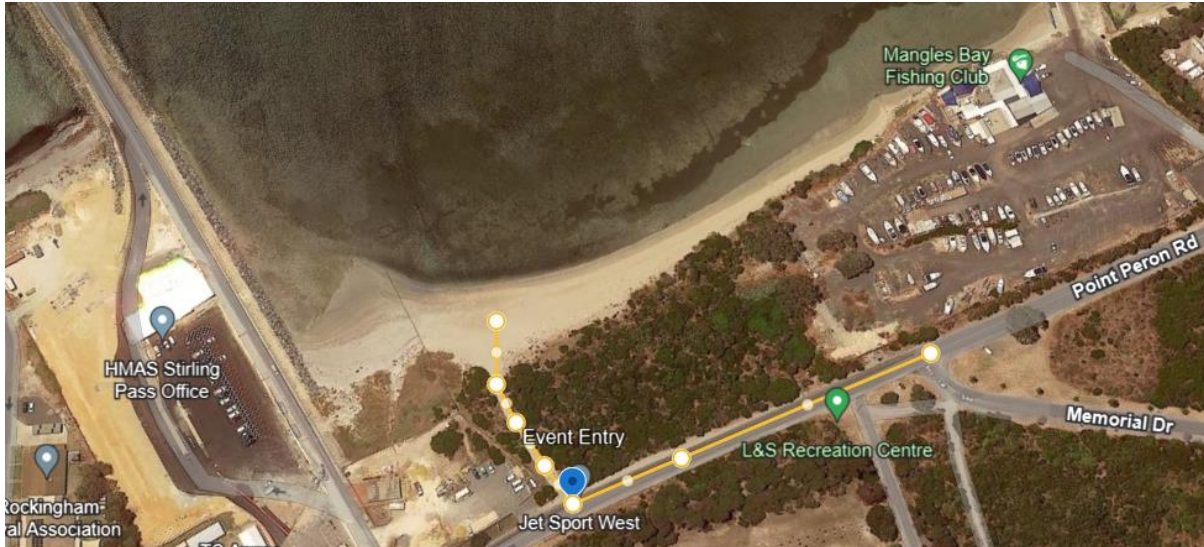


Event Detail: Salt, Sand & Spray (Approval A19752104)

When – Jan 27th from 0800

Where – Mangles Bay, Point Peron Rd. Rockingham

[Location Map](#)



What to expect – This event is the first circuit race for MJWA for the 2024 season and will consist of a fixed course in the bay for circuit racing activity. A course map can be found later in the document. The event will be beach start style. Per the rules craft will be able to have only 1 occupant for this event, if it is a shared craft lap counting and timing will determine the A driver and B driver positions.

Pending additional races after lunch and timing for the day a special event will be organised before the end of day this event will be a timed Barrel Race, described below!!

Below are the mapped areas for access – remember this is a shared facility with PWC members and fellow Jet enthusiasts so we may have some visitors on the day. Marked in **RED** below in the map is the PWC access corridor for members to still access and use the beach and the corridor to the ocean along the jetty.

All members must remain diligent with outside traffic in the area such as pleasure craft, Paddle boarders, Canoes and the like, it is highly likely we will need to pause and remove spectators or the general public from the active race area, be patient and polite if we need to do this.

In **PURPLE** below is the MJWA beach area for vehicles and tents

Inside the **YELLOW** is the active race area we will occupy on the day. Within the yellow area is the race track lay out as well as two track lines marked in orange and also green.

Large blue drums will form the boarder of the race area

Below the map is the start and race instructions for the first half of the day, the layout is simple but allows for CW and CCW runs as well as a fun event at the end of the day.



1. **Start Path** – Craft to start from beach and follow Orange line. Outside 1 > Outside 2 > Outside 6 and then across the white line to start the first lap of the race.
2. **Race Lap's Path** – After completing the start path craft are to follow the Green line whilst observing the "Inside/Outside" mapping for the nominated laps. Lap 1 will commence as you pass the start/finish line. Approximate lap distance is 700Mts + 300Mts for the start.
3. **Special Event** – Barrel Race – Single craft only on course for this event. Timed from leaving the beach. Craft will complete a CCW loop around Outside 1, then continue to complete a CW loop around Inside 2 then continue to a CCW loop around Outside 3 then a straight run to the beach for a finish. This event can have one or two competitors in the craft and will have a defined point off the beach as a stop point to slow down the craft for a safe landing on the beach.



Supplementary Regulations: Salt, Sand & Spray

Date: 27 Jan 2024

Location: Mangles Bay - Rockingham

Event Type: Circuit

Craft: Mini Jet Only

Director: Brad Cuss

Sweep: Not Required

Entry: Cash / EFT

Price: \$50 Per Craft

- This event is beach access and launch on the sand a 4WD is recommended
- MJWA have a key for the gate to access the beach – the gate will be manned and non MJWA members(PWC) will be advised to use only the red allocated area for access.
- Race signage will be in use on Point Peron Road
- Race signage will be on the beach North of the access road
- Craft Scrutineering from 0830 – all craft must attend and be in race prep condition as per the rules. Wear plates under hulls is not required and Roll hoops are not required for the event.
- Event and safety brief will be at 0915 around the Club Trailer
- Course is as per Map found above and subject to change on the day for reasons determined by the race officials
- Race Laps will be determined on the day
- A group split may occur on the day pending numbers of craft entered
- Race flags will be in use
- Beach start means – Engines OFF, Nav or Helper holding boat in the water still until start flag is dropped.
- Teams can bring a BBQ to the beach for lunch – All rubbish must be taken with you
- No checkpoints manned in this event
- Craft landing area will be to the north of the event entry lane
- No fuelling of craft within 100m of the water way
- This event does contribute race points to the season per the rules
- Camping is not permitted – respect the area and leave it as you found it or better
- Emergency procedures as per event approvals and contact details in event folder
- Prizes will be awarded on the day